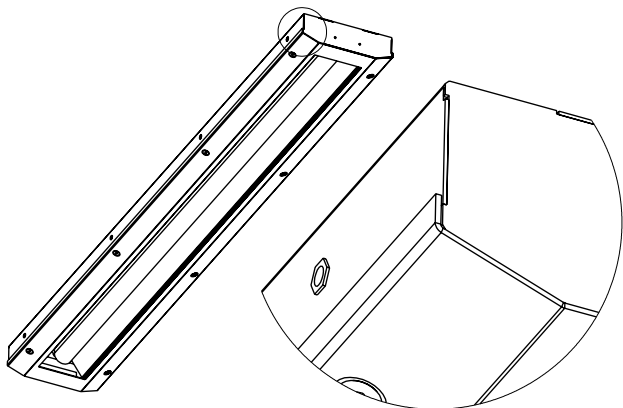


SOXER-LED / SOXER-LED-FC

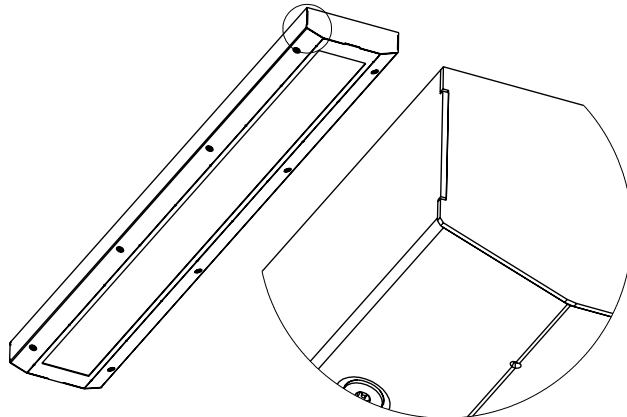
Technical conditions for luminaire installation ENG

IP65, class I

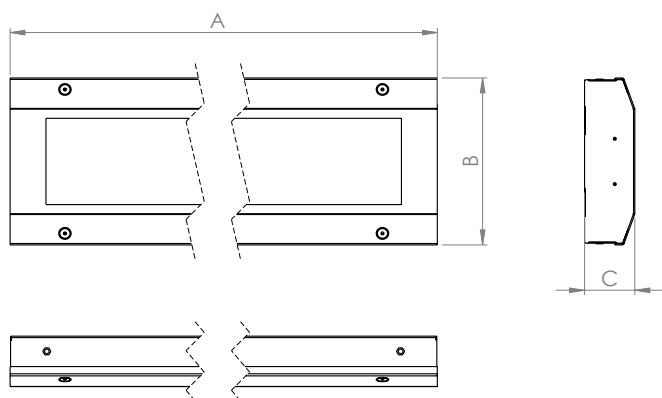
SOXER-LED



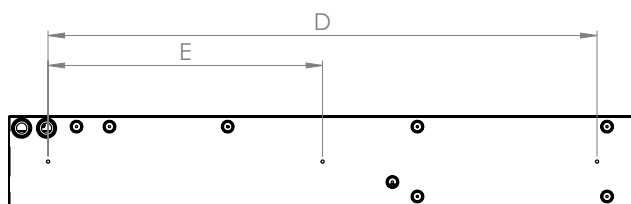
SOXER-LED-FC



Luminaire dimensions:



Distance of mounting holes Ø6,3:



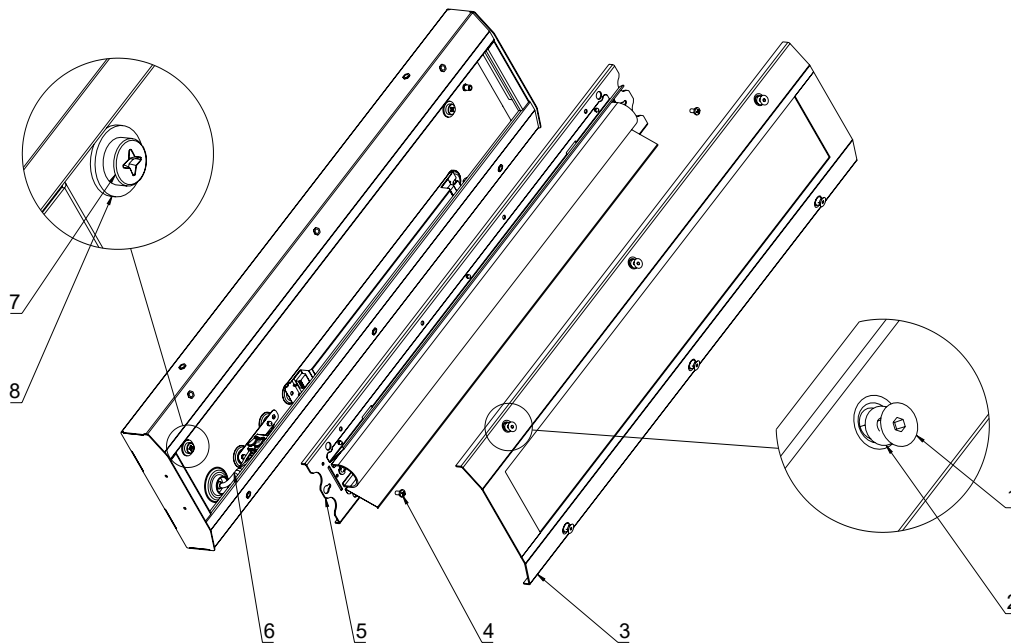
Luminaire dimensions (mm)

Distance of mounting holes Ø6,3 (mm)

Type	Luminaire dimensions (mm)			Distance of mounting holes Ø6,3 (mm)	
	A	B	C	D	E
SOXER-LED-1450/1650	421	184	56	320	-
SOXER-LED-3300/2900	701	184	56	540	-
SOXER-LED-5800/6600	1257	184	56	1100	550
SOXER-LED-7200/ 8200	1519	184	56	1360	680
SOXER-LED-FC-1650/1450	426	186	56	320	-
SOXER-LED-FC-3300/2900	706	186	56	540	-
SOXER-LED-FC-5800/6600	1262	186	56	1100	550
SOXER-LED-FC-7200/8200	1524	186	56	1360	680

Technical data:

Thetechnical data are mentioned on the label of the lighting fixture. (ambient temperature, IP degree, etc.).



Mountig:

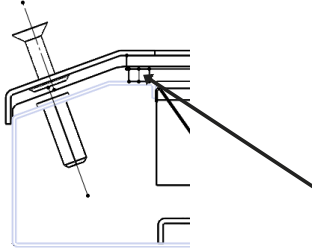
1. Unscrew the screws (1), which are fixing cover (3), but do not take out the screws, because sealing (2) can fall of and remove the cover (3).
2. Unscrew the screws (4), which are holding reflector (5) and remove the reflector. **Do not touch LED III**
3. Fix the luminaire by screws (5).
4. Do not forget sealing washer (8). screws (7) are not part of the product. Screws M6 are recommended.

Clip	SOXER-LED	SOXER-LED-DALI	MULTISOXER-LED			
L1	phase conductor	phase conductor	conductor of charging phase			
L2	-	D1	conductor of switching phase			
L3	-	D2	-			
N	neutral conductor	neutral conductor	neutral conductor			
T	protecting conductor	protecting conductor	protecting conductor			

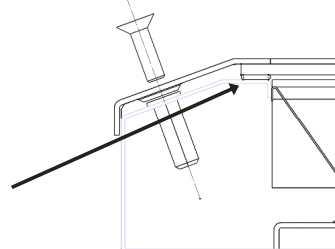
*The marking and connection of individual terminals may differ depending on the required lighting fixture equipment.

4. Connect conductors to terminal block (6).
5. Insert reflectors (5) and secure with screws (4). Tightening torque 2Nm.
6. Close Luminer using cover (3).
7. Push the cover (3) for the compression of the seal and screw up (1). Tightening torque 4Nm. Danger overtightening the screw !

Without compressed seal = screw and nut are not in the axis



Compressed seal = screw and nut are in the axis



seal



The luminaire must be connected to the mains only by a person with corresponding qualification pursuant to applicable regulations on professional competence in electrical engineering.

When installing the luminaire, electrostatic discharge safety measures must be observed by using suitable tools!
Non-compliance with the installation instructions will result in a loss of the manufacturer's liability for any damage!

The light source in this luminaire is non-replaceable.

The luminaire does not require any special maintenance. Clean a soiled luminaire with lukewarm water and detergent.



ATTENTION!!!

For wall installation of lighting fixture must be LED driver positioned facing downwards

WARNING – potential danger of electrostatic charging.

WARNING – the lighting fixture must be installed in the position, which does not allow the touch of persons and parts of the fixture.

WARNING – the lighting for fixed installation.

WARNING – the fixture should be cleaned with damp duster only. It is necessary to keep periodic cleaning intervals of lighting fixture.

WARNING – do not open under voltage.

WARNING – replace protective cover.



The manufacturer is engaged in the Waste from Electrical and Electronic Equipment collection system according to applicable regulations and in a packaging collection and recycling system of the EKO-KOM company (EK-F06070058).